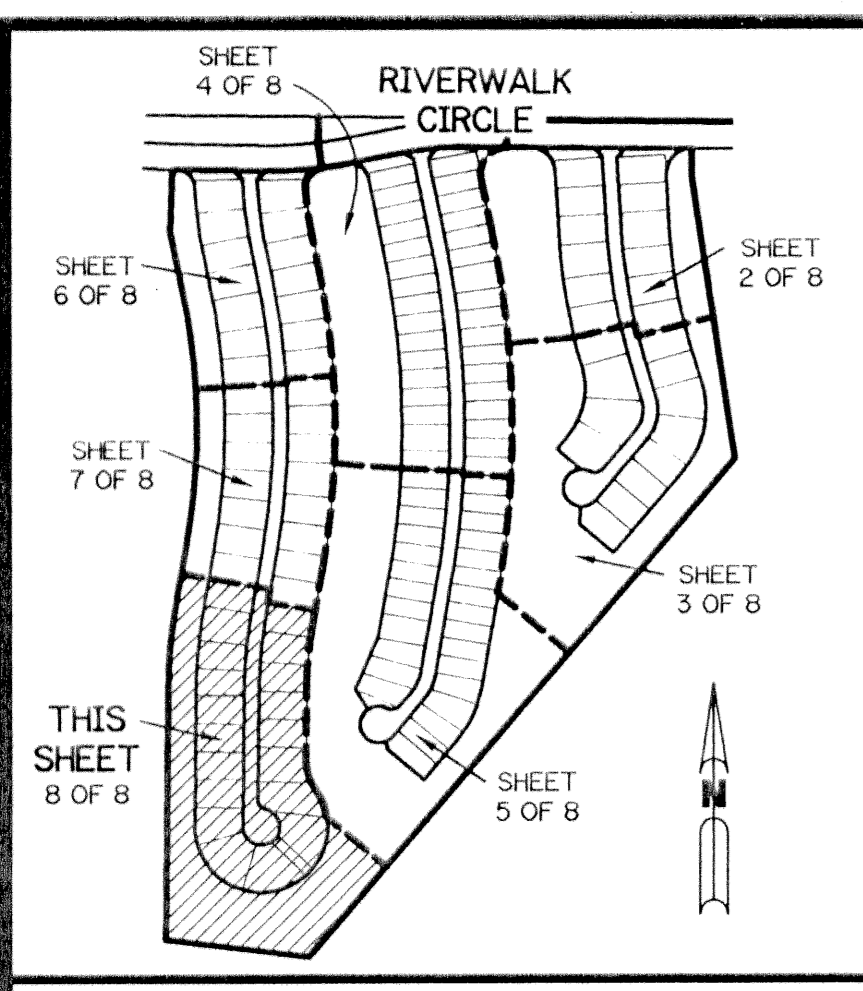
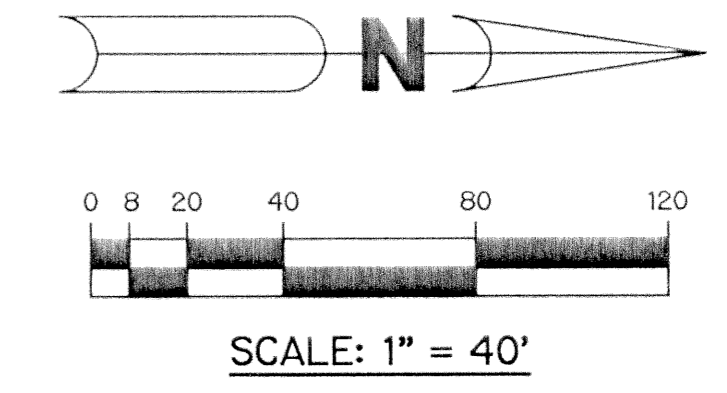


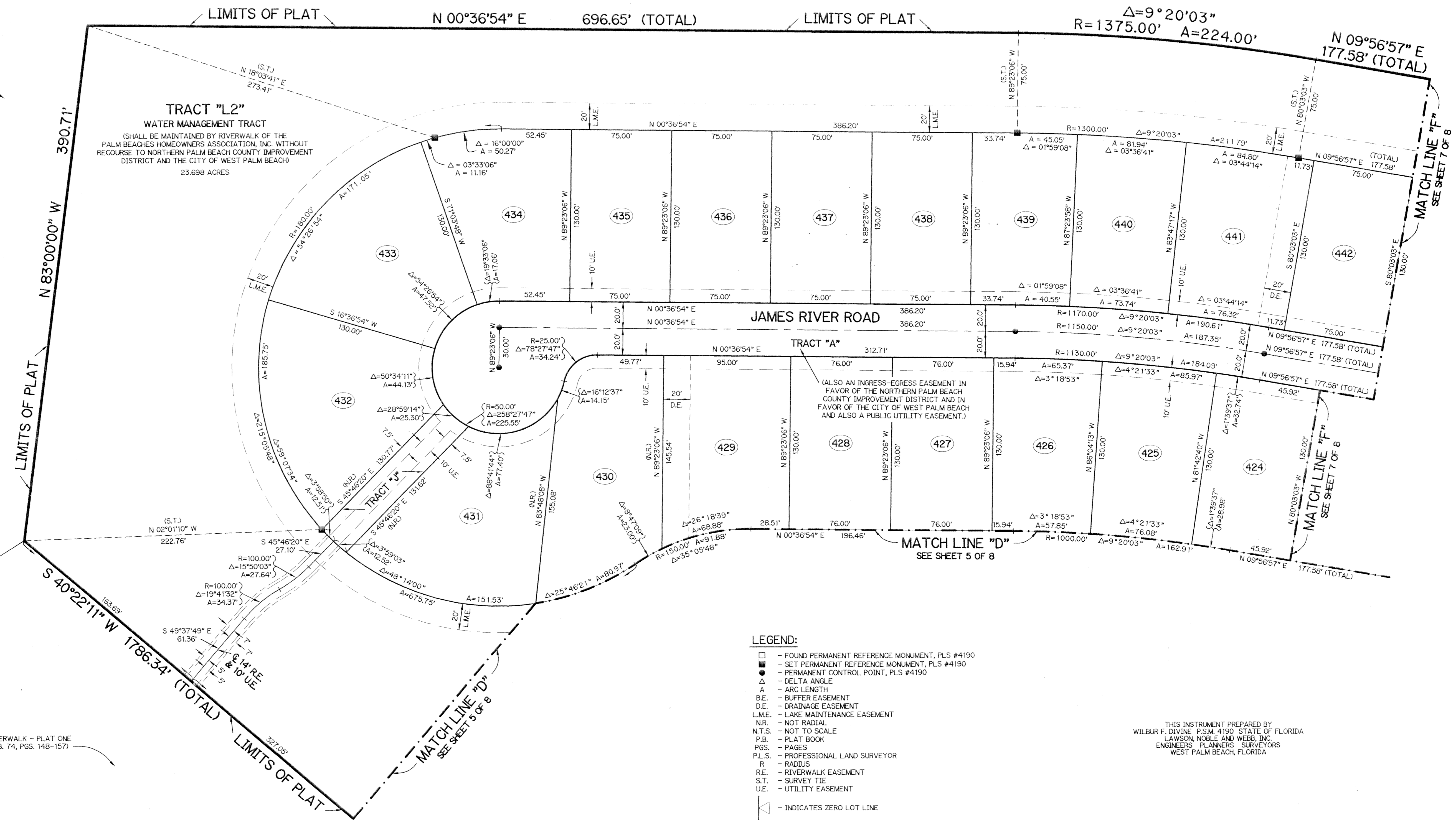
# RIVERWALK - PLAT THREE

A PARCEL OF LAND LYING IN SECTION 21, TOWNSHIP 43 SOUTH,  
RANGE 42 EAST, CITY OF WEST PALM BEACH,  
PALM BEACH COUNTY, FLORIDA.

SHEET 8 OF 8 DECEMBER, 1995



KEY MAP  
N.T.S.



- LEGEND:**
- - FOUND PERMANENT REFERENCE MONUMENT, PLS #4190
  - - SET PERMANENT REFERENCE MONUMENT, PLS #4190
  - - PERMANENT CONTROL POINT, PLS #4190
  - Δ - DELTA ANGLE
  - A - ARC LENGTH
  - B.E. - BUFFER EASEMENT
  - D.E. - DRAINAGE EASEMENT
  - L.M.E. - LAKE MAINTENANCE EASEMENT
  - N.R. - NOT RADIAL
  - N.T.S. - NOT TO SCALE
  - P.B. - PLAT BOOK
  - P.G.S. - PAGES
  - P.L.S. - PROFESSIONAL LAND SURVEYOR
  - R - RADIUS
  - R.E. - RIVERWALK EASEMENT
  - S.T. - SURVEY TIE
  - U.E. - UTILITY EASEMENT
  - - INDICATES ZERO LOT LINE

THIS INSTRUMENT PREPARED BY  
WILBUR F. DIVINE, P.S.M. #190 STATE OF FLORIDA  
LAWSON, NOBLE AND WEBB, INC.  
ENGINEERS, PLANNERS, SURVEYORS  
WEST PALM BEACH, FLORIDA

SUBDIVISION # RIVERWALK  
BOOK 76 PAGE 122  
FLOOD ZONE -  
QUAD # -  
SE -  
PUD NAME -  
ZIP CODE -

RIVERWALK - PLAT ONE  
(P.B. 74, PGS. 148-157)